



How to engage with the **FLY CREATIVITY LAB TOOLKIT**

The FLY Creativity Lab Toolkit is a flexible, open-ended deck designed to spark creative ideas and hands on exploration. The ideas are simple and can be used in any order many times. You can mix and match ideas with projects and hopefully apply ideas outside of the toolkit. Start by following the instructions on one card and see what you make from that!

Guide to the Activities

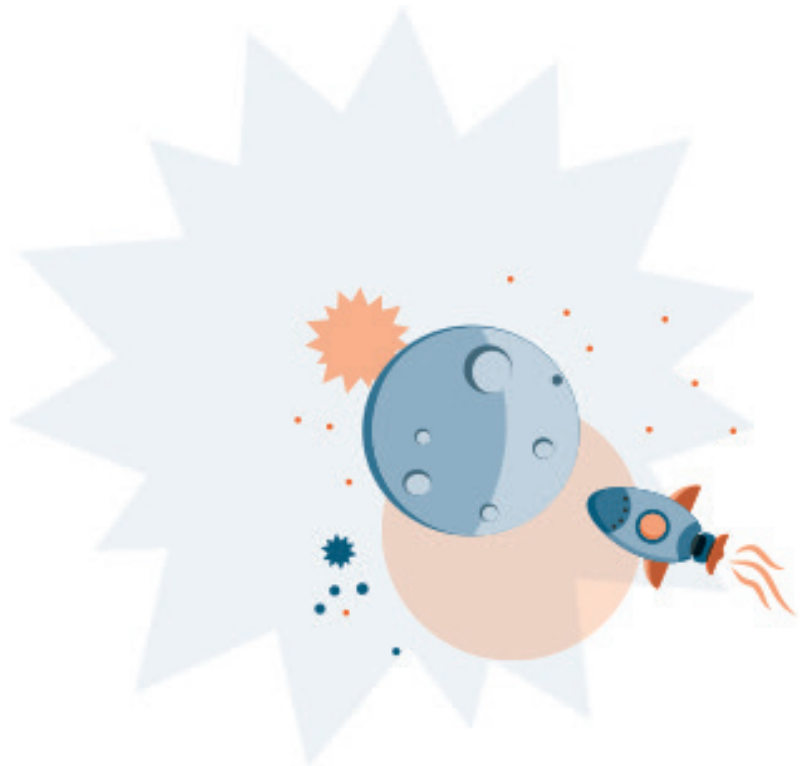
Don't know how to get started? Choose a card (even do a card again) and start by understanding and defining the project by asking yourself questions about the topic and let yourself think of many different possibilities. Brainstorm as many ideas as you can and continue with your favorite. Go back and try one of your other ideas.

Curricular Connections

Based on units and lessons you're already teaching, which of these cards could infuse your plans with the arts? Review the cards and see if one of them fits well into your existing classroom plans. The interdisciplinary subjects within the Toolkit can be adapted and modified to connect more deeply with your units and infuse existing curriculum with arts inquiries.

For Example: Are you studying scientific discoveries? Use Toolkit Card #23 and allow students imaginations to flourish! This card asks the young artist to create a new creature that scientists have discovered. This card could relate to various vocabulary you would like to emphasize, such as, biosphere, climate, environment, senses, appendages, and more!

For Example: Begin a poetry unit with Toolkit Card #1. Ask students to illustrate a poem. After completing your this unit ask them to illustrate the same poem. How do their drawings change? Are they less literal after talking about the emotion and art of words?



Community Engagement

Invite students to find the toolkit cards that relate to Ypsilanti. “Do they recognize the places/locations in the cards? Have they been there before? What places might be added to this Toolkit?”

For Example: Toolkit Card #19 asks the students to design a city. Perhaps consider all the different parts of Ypsilanti. What kinds of places populate our city? Which places are their favorite? If they could, how would they redesign it? What do they think needs to be added to the city and why?

Classroom Culture

Use the toolkit to kick off the school year, or come back from a break, and establish, or re-establish a sense of belonging in the class/school/community.

The arts, especially when personally relevant, can allow for opportunities to appreciate each other, explore diverse perspectives, and learn about ourselves and where we are living.

For Example: Using Toolkit Card #33, have students design a mask that shows their true self or change it up to their most imaginative self, or animal they might identify with. Build an “appreciation exercise” and ask students to choose one thing they appreciate about someone else’s artwork, and share why they appreciate this.

Open Time

Maintaining Engagement: For students who finish their work quickly and need something constructive to do while others finish up. Or students who need a quiet moment away from the group such as kids feeling anxious, those needing a creative challenge or are feeling unsettled.



Do Now! Is this a technique you use in your classroom? The toolkit is great for classroom activities that are meant to help kick start a lesson, a morning routine, and a transition routine. At the beginning of your class, allow students 5-10 minutes to work on a Toolkit card in order to promote an environment of focus before beginning a complex lesson.

Team building: Work in small groups by meeting the creative card challenge together. Assign roles for each team member such as ‘card reader’, ‘material helper’, ‘idea recorder’, and ‘time keeper’.